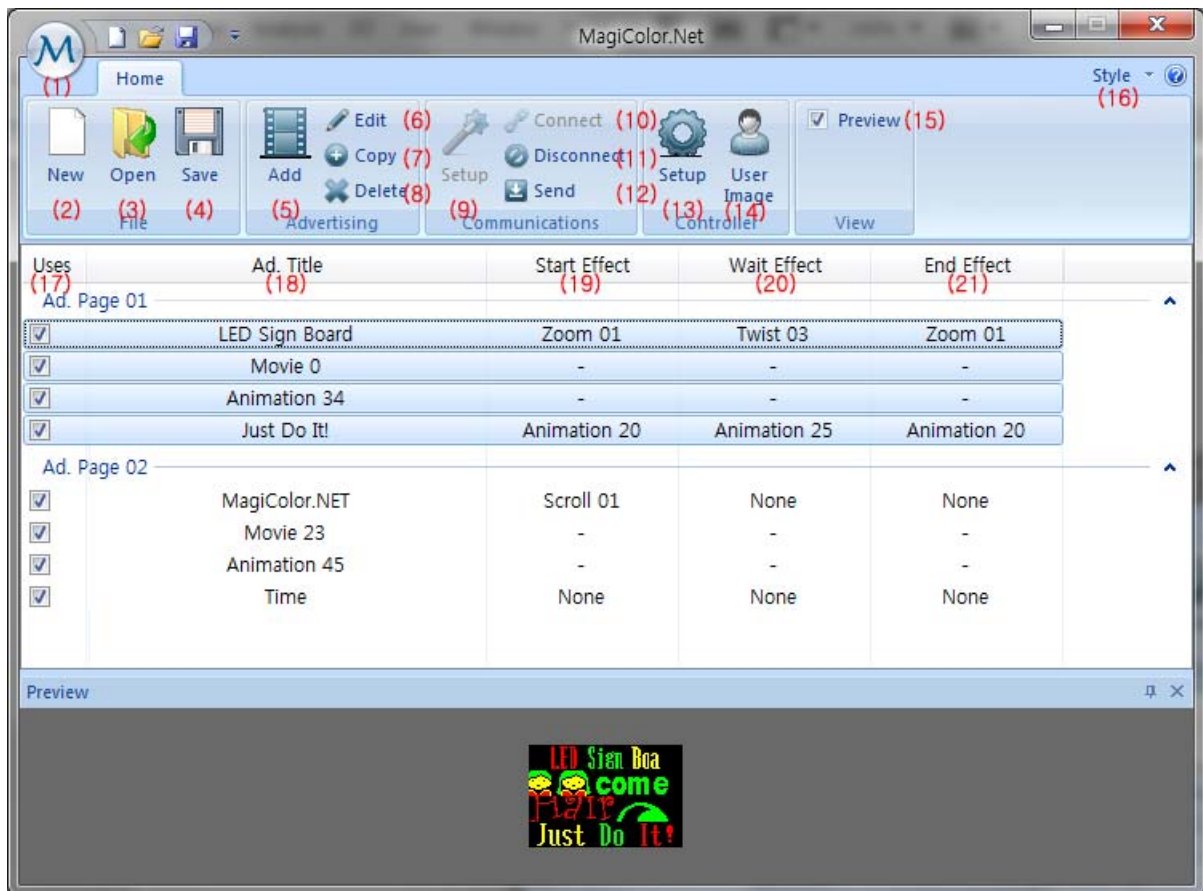


PC Program Manual (For Multi-Row)



2011.09.16

◆ PC PROGRAM'S MAIN SCREEN



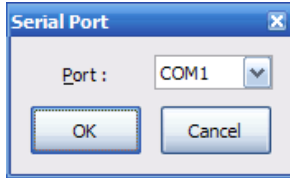
◆ CONNECT FROM PC PROGRAM TO LED SIGN BOARD

* Click Setup(9) Icon -> Click Connect(10) Icon

◆ HOW TO USE OPERATION PC PROGRAM

- 1. Main Menu:** Users can confirm by themselves the basic menu of the program and previous Ad-List.
 - 2. New file:** Create the new Ad-List. Setup a project information, module setup, and language.
 - 3. Open:** Open the previous Ad-List.
 - 4. Save:** Save the current Ad-List.
 - 5. Add:** Add the String, English 2Line, Image, Movie, Animation, etc.
 - 6. Edit:** Edit (or Modify) a selected Ad-List.
 - In image/video/animation case, selected same kind of ads can be modified. But, different kind of ads can not be modified.
- * **Example**
- => Correct case: Image01 -> Image07
 - => Incorrect case: Image01 -> Movie07
- 7. Copy:** Copy a selected Ad-List.
 - Or push the "CTRL+C" and "CTRL+V" button.
 - 8. Delete:** Delete a selected Ad-List.
 - Or push the "DELETE" button.

9. **Setup:** Setup the communication port to the LED sign board.



10. **Connect:** Connect the sign board to PC program.

11. **Disconnect:** Close the communication with PC program.

12. **Send:** Transmit the edited Ad-List to the sign board.

13. **Setup:** Change the sign board setup and the program Language.

14. **User Image:** Send the User's image to the LED sign board.

15. **Preview:** Show the Current Ad-List.

16. **Style:** Change the PC Program screen.

17. **Uses:** Select the number of Ad-Page.

18. **Ad. Title:** Show the kinds and contents of Ad-List which is saved in the project.

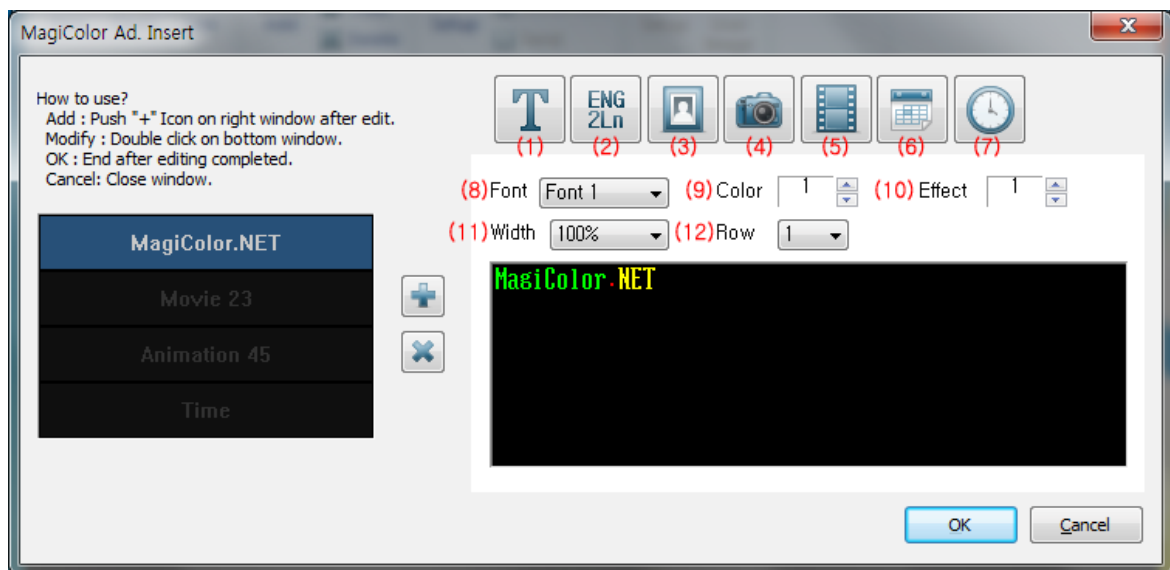
19. **Start Effect:** Show the start effect.

20. **Wait Effect:** Show the stand by effect.

21. **End Effect:** Show the closing effect.

22. **Preview:** User can confirm the same effects in the PC program as the LED Sign Board effect. It is possible to screen size.

◆ ADD AD-LIST (String, English 2Line, Image, etc)



1. **Icon:** Add a string (text)

2. **Icon:** Add an English 2-Line (using the small font)

3. **Icon:** Add an embedded image (approximately 72~86 contents)

4. **Icon:** Add an embedded movie (approximately 28~44 contents)

5. **Icon:** Add an embedded animation (approximately 18~48 contents)

6. **Icon:** Add a Date

7. **Icon:** Add a Time

8. **Font:** Select the Font

- English (or ASCII): 5 fonts

- Chinese: 2 fonts

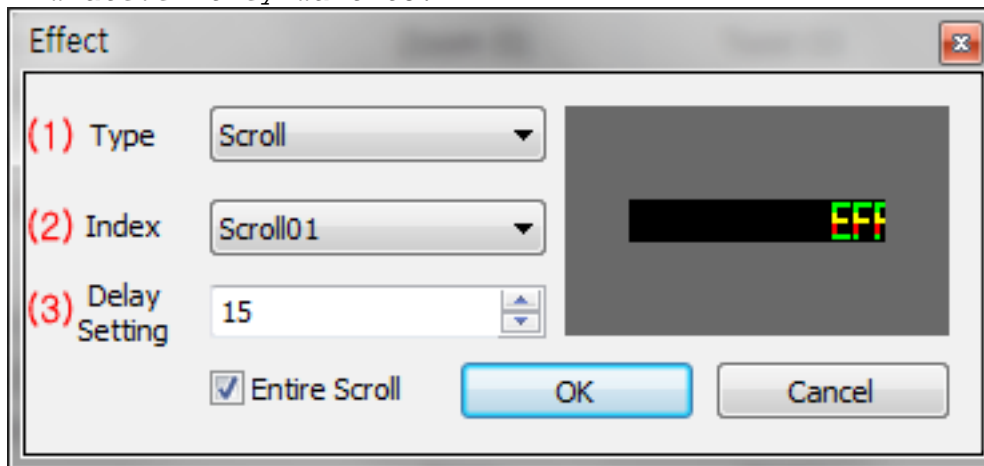
- English 2Line: 1 font

9. **Color:** Select the Font-Color (23 kinds)
10. **Effect:** Select the Font-Attribute (16 kinds)
11. **Width:** Select the Font-Width (4 kinds)
12. **Row:** Select the Height of the Ad-List (multiple of row)

◆ **EFFECT SETTING (for String and English 2Line)**

Uses	Ad. Title	(1) Start Effect	(2) Wait Effect	(3) End Effect
Ad. Page 01				
<input checked="" type="checkbox"/>	LED Sign Board	Zoom 01	Twist 03	Zoom 01
<input checked="" type="checkbox"/>	Movie 0	-	-	-
<input checked="" type="checkbox"/>	Animation 34	-	-	-
<input checked="" type="checkbox"/>	Just Do It!	Animation 20	Animation 25	Animation 20
Ad. Page 02				
<input checked="" type="checkbox"/>	MagiColor.NET	Scroll 01	None	None
<input checked="" type="checkbox"/>	Movie 23	-	-	-
<input checked="" type="checkbox"/>	Animation 45	-	-	-
<input checked="" type="checkbox"/>	Time	None	None	None

* **Arrow:** When click the arrow in the above screen, users can change whatever they want to.



1. **Type:** Select a kind of the effect.
 - Auto
 - Animation: 50 kinds
 - View: 8 kinds
 - Scroll: 10 kinds
 - Wave: 7 kinds
 - Zoom: 12 kinds
 - Color: 7 kinds
 - Twist: 4 kinds
 - None
2. **Index:** Select an index of the effect type.
3. **Delay Setting:** Select a delay time of the effect.

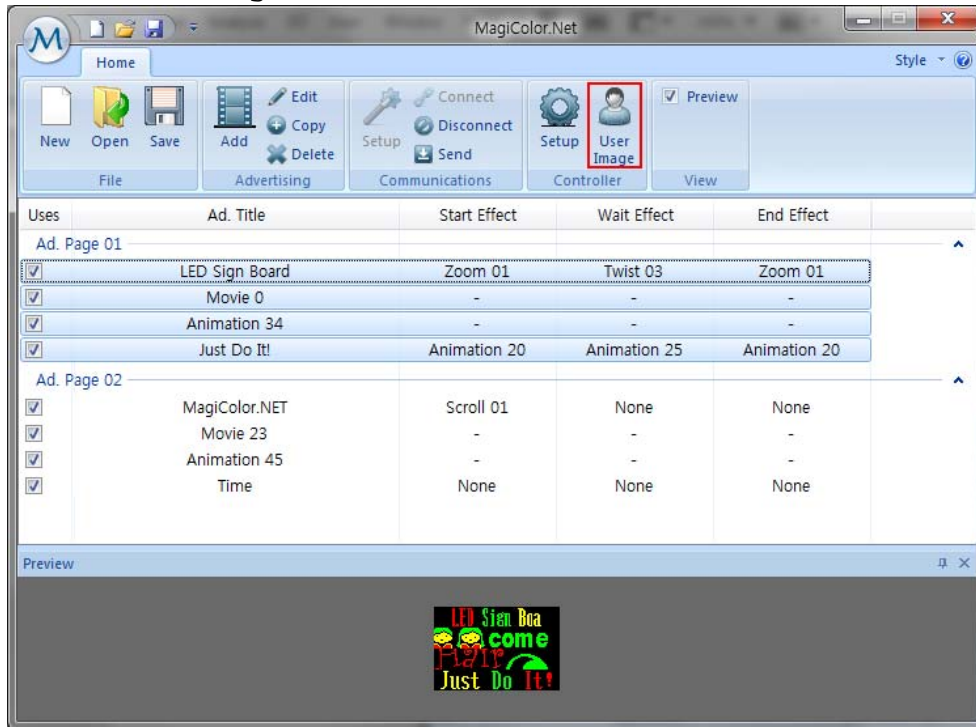
◆ SETUP THE LED SIGN BOARD



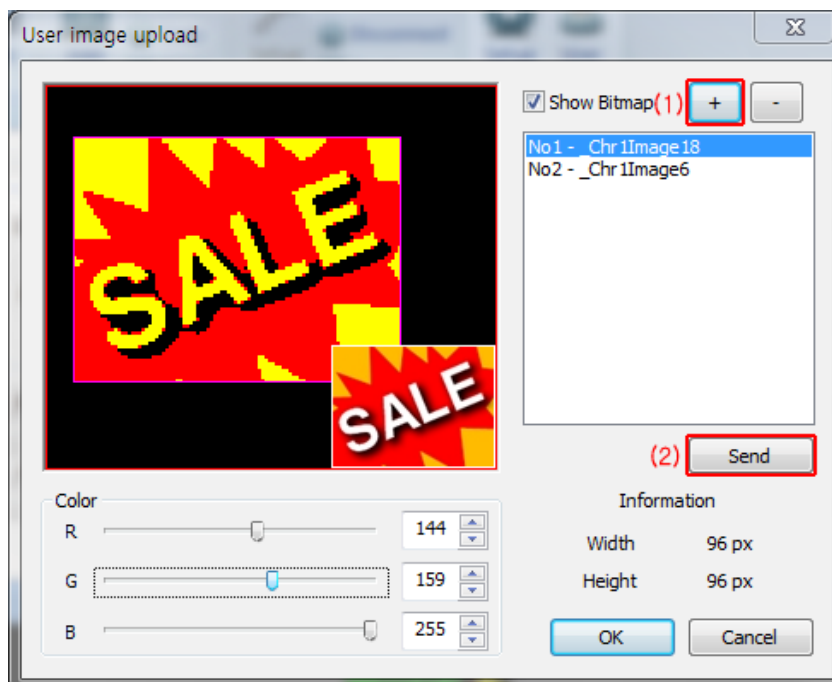
1. **Version:** Information Viewer for the "Version" of the LED Sign Board.
2. **Manufacture:** Information Viewer for the "Manufacture" of the LED Sign Board.
3. **Date & Time:** Information Viewer for the "Date & Time" of the LED Sign Board.
4. **Power On/Off:** Setup the "ON/OFF TIME" of LED Sign Board.
5. **Brightness:** Setup the "DAY/NIGHT Brightness" of LED Sign Board.
6. **Language:** Information Viewer for the "Language Type" of the LED Sign Board.
 - English: It can be input the English and Chinese.
 - Korean: It can be input the English and Korean.
7. **Color:** Information Viewer for the "Color type" (3-Color/1-Color) of LED Sign Board.
8. **Beep:** Setup the "BEEP" of LED Sign Board.
9. **Column & Row:** Setup the number of Column and Row.

◆ HOW TO USE USER'S IMAGE

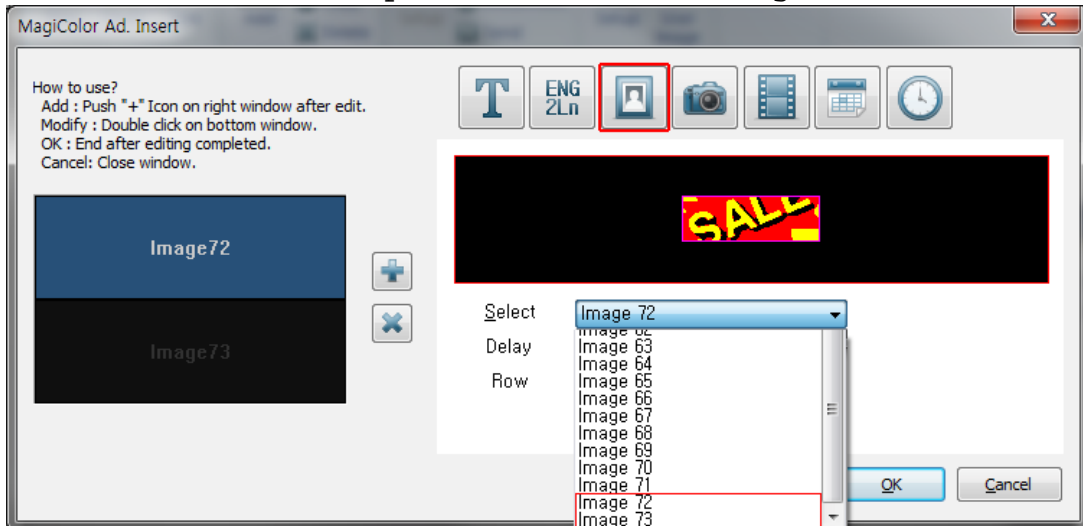
0. **BEFORE CHECKING:** Please make sure whether communication cable must be connected from PC to LED Sign Board. If so, "User Image" icon will be activated.
1. Click "User Images" icon as below.



2. You can see the below picture and click "+" button in order to search for image files (bmp, jpg, png, etc) saved in your computer.
3. Click "Send" button.
 - Please note that the maximum additional images are 8 frames.



4. You can see the below picture. And click image icon.



5. Your Additional Images will be saved as "Image 73" Click "Image 73" and then Click "OK" Button and then Image 73 will be added in Ad-List as below picture.

